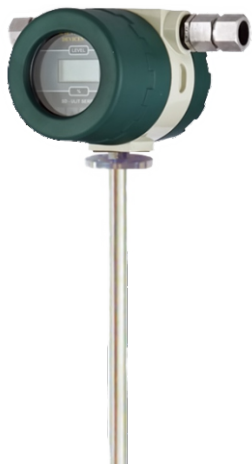




An ISO 9001-2015 Certified Company



Capacitance Level Indicator, Switch And Transmitter (CLT Series)

Capacitance Level Indicator, Switch And Transmitter is ideally suitable for level measurement and control of liquids and some slurries of homogenous composition having a stable dielectric constant. The performance of these instruments is not affected by the properties of the liquid such as conductivity, corrosiveness and viscosity

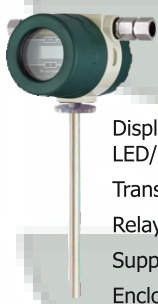
Specification

- Tank height /Range : 0 to 10 mtrs (depending upon probe)
- Design Temperature : Up to 150°C
- Design Pressure : Up to 25 Kg/cm²
- Connection : Flanged to ASA/BS/DIN/ Screwed BSP/NPT
- Probe Material : SS304/SS304L/SS316/SS316L/PTFE/ Lined/PTFE Lined

Product Code : CLT Series

Available Options

Capacitance Level Indicator, Transmitter And HI-LO Switch



Display : 3 ½ Digit, 0.5 " LED/LCD
Transmitter out put : 4-20mA+HART
Relay out put : 1NO+1NC
Supply : 230 VAC/24VDC
Enclosure : Ex -Proof

Product Code : CLT-I-HLS

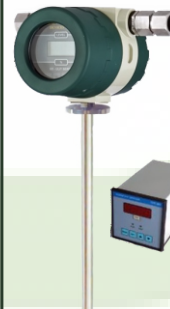
Capacitance Level Transmitter



Out Put : 4-20 mA+HART
Supply : 230 VAC/24 VDC
Enclosure : Ex -Proof

Product Code : CLT-T

Capacitance Level Transmitter With Panel Mounted Indicator And HI-LO Switch



Display : 3 ½ Digit, 0.5 " LED/LCD
Out Put : 4-20 mA+HART
Supply : 230 VAC/24 VDC
Enclosure : Ex -Proof

Product Code : CLT-I-HLS-PM

Capacitance Level Switch



Relay out put : 1NO+1NC
Supply : 230 VAC/24 VDC
Enclosure : Ex -Proof

Product Code : CLS

Capacitance Level Indicator, Transmitter And HI-LO Switch



Display : 3 ½ Digit, 0.5 " LED/LCD
Transmitter out put : 4-20 mA+HART
Relay out put : 1NO+1NC
Supply : 230 VAC/24VDC
Enclosure : Ex -Proof

Product Code : CLT-I-HLS-R

Capacitance Level Transmitter With Panel Mounted Indicator And HI-LO Switch



Product Code : CLT-I-HLS-PM-R